



Lyndhurst (201) 438-1500
Edison (732) 225-4330
Ewing (609) 882-6330
Elmsford (914) 592-1212
Manhattan (212) 772-0581

imagePROGRAF
PRO-4000/2000
PRO SERIES

THE PRINTERS THAT ARE EQUALLY OBSESSED.

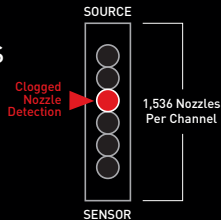


THE PRINTERS THAT COMPLETE YOUR OBSESSION

Introducing the Canon 24" imagePROGRAF PRO-2000 and 44" PRO-4000 large-format professional printers with 11-Color plus Chroma Optimizer ink system.

SMARTER NOZZLES

Engineered with 18,432 nozzles and sensors that continuously monitor status and deliver optimum results.



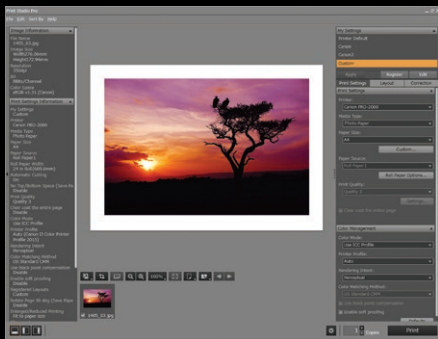
ANTI-CLOGGING TECHNOLOGY

The PF-10 print-head with FINE technology generates fast print speeds and reduces the possibility of clogging. Ink ejection conditions are precisely checked by sensors, and if a clog is detected, another nozzle will automatically provide backup.



MULTIFUNCTION ROLL SYSTEM

The optional, dual-purpose Multifunction Roll System can be used in two different ways: a two-roll media system during the day, when production is high, and a bi-directional Take-up unit at night, when large, unattended prints are running.



PRINT STUDIO PRO

Creating large-format prints is now easier with Print Studio PRO. This software offers features that streamline your printing workflow. Compatible with Canon Digital Photo Professional Software, Adobe® Photoshop® Software, Adobe® Lightroom® Software, and Adobe® Elements Software, Print Studio PRO offers versatility never before seen with Canon large-format printing.

COLOR CALIBRATION

Producing the correct color is paramount when printing high-quality, archival work. The built-in Color Calibration function uses multi-sensors to read color density and automatically calibrate the printer, so that the last print looks as stunning as the first.

EFFORTLESS MEDIA HANDLING

Loading media on a Canon large-format printer has never been easier. Simply set the roll holder in the printer, rotate the roll holder handles, and let the media automatically feed into the printer. And since there's no need to touch the paper, you further reduce the risk of creasing and blemishes.

L-COA PRO IMAGE PROCESSING ENGINE

This high-precision control engine performs the high-speed processing of massive amounts of image data, generates the printing data, and controls the optimal ink layout for achieving high-resolution prints.

KEEP YOUR COLOR IN LINE



LUCIA PRO INK SYSTEM

The LUCIA PRO 11-Color plus Chroma Optimizer ink system satisfies the demands of the most critical photographer or graphic artist. Denser droplet placement provides a broader color gamut, and the Chroma Optimizer provides improved gloss uniformity for superb glossiness and anti-bronzing. Incredibly accurate color reproduction, outstanding image clarity, and enhanced detail in darker areas distinguish each print. On fine art papers, higher black density renders even the finest shadow detail for a print that becomes a work of art.

11-INK SYSTEM PLUS CHROMA OPTIMIZER

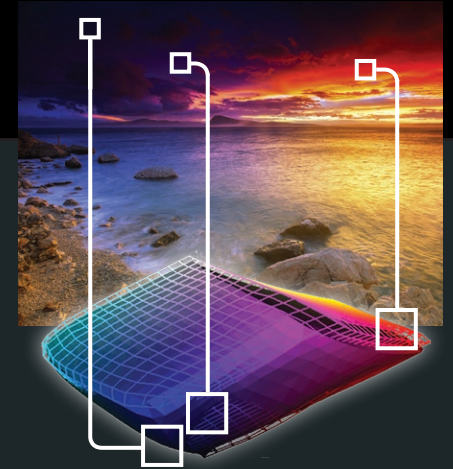
Using new pigment ink with modified compositions, LUCIA PRO Inks have enabled a broader color gamut and greater shadow reproduction in dark areas.

NO SWITCHING OF BLACK INKS

On other printers, switching from matte black to photo black consumes a significant amount of ink and time. The PRO Series is designed to work seamlessly when changing media types. Matte black and photo black inks have their own dedicated nozzles, so no switching is necessary. You can print on fine art paper then glossy paper with no worries, no changes, and no waste.

WIDE COLOR GAMUT

This new ink system adopts 11 colors and Chroma Optimizer. It helps you achieve improved color reproduction and image clarity as well as enhanced darker areas. This system faithfully reproduces colors and dark areas crucial for printing works of fine art. And the newly formulated blue and magenta inks will help recreate the finest details when printing nightscapes and sunsets.



imagePROGRAF PRO-4000/2000

TECHNICAL INFORMATION

PRINT		GENERAL	
Printing Technology	FINE: Full-Photolithography Nozzle Engineering	Interfaces	Hi-Speed USB, 10/100/1000Base-T/TX, Wi-Fi
Head Configuration	12-Channel Integrated Type	Printer Language	SGRaster
Nozzle Pitch	600 dpi x 2	Recommended Operating Environment	Temperature: 59° - 86° F (15 - 30 C°) Humidity: 10 - 80% (No Condensation)
Nozzle Configuration	1,536 Nozzles x 12 Channels: 18,432 Total	Power Supply	AC 100-240 V (50-60 Hz)
Droplet Size	4 Picoliters per Color	Power Consumption	PRO-4000 Maximum: 112 W or Less PRO-2000 Maximum: 88 W or Less Standby: 1.8 W or Less Power Off: 0.5 W or Less
Maximum Print Resolution	Up to 2400 x 1200 dpi	Printing Software	imagePROGRAF Printer Driver, Print Studio PRO** Print Plug-In for Microsoft Office, Digital Photo Professional, PosterArtist Lite
Ink Information	Type: Pigment-Based LUCIA PRO Ink Technology PFI-1100 (160 ml): PBK, MBK, C, M, Y, PC, PM, GY, PGY, R, B + CO PFI-1300 (330 ml): PBK, MBK, C, M, Y, PC, PM, GY, PGY, R, B + CO PFI-1700 (700 ml): PBK, MBK, C, M, Y, PC, PM, GY, PGY, R, B + CO	Optional Software	PosterArtist
PRINTER SPECS		OS Compatibility	32-bit: Windows* Vista/7/8/8.1/10 64-bit: Windows* Vista/7/8/8.1/10 Mac: OS X 10/7.5-10.11
Print-Head	PF-10 (I)	Utilities	Accounting Manager, Device Management Console, Media Configuration Tool, Quick Utility Toolbox
Colors	Photo Black, Matte Black, Cyan, Magenta, Yellow, Photo Cyan, Photo Magenta, Gray, Photo Gray, Red, Blue, Chroma Optimizer	User-Replaceable Items	Print-Head (PF-10) Maintenance Cartridge (MC-30) Rotary Cutter (CT-07)
Ink Tank Shipped with Printer	12 Tanks: PRO-4000 (190 ml Starter Tank, Each Color) PRO-2000 (160 ml Starter Tank, Each Color)	Options	PRO-4000 : Roll Holder Set (RH2-45) PRO-4000 : Multifunction Roll System (RU-41) PRO-2000 : Roll Holder Set (RH2-27) PRO-2000 : Multifunction Roll System (RU-21)
Hard Disk Capacity	320 GB	* The maximum printable length varies, depending on the application, OS, and RIP used.	
Printer Memory	1 GB	** Print Studio PRO plug-in software is compatible with Adobe Photoshop CS5/CS6/CC/CC(2014)/CC(2015), Adobe Photoshop Elements 11/12/13, Adobe Photoshop Lightroom 3/4/5/6, and Canon Digital Professional 3.12 or later.	
Printer Stand	Standard	<h2>PRELIMINARY INFORMATION</h2>	
Display	3.5" Color LCD Touch-Screen		
Size/Weight (with basket open)	PRO-4000 : 46.0" (H) x 62.7" (W) x 38.7" (D)/271 lb. PRO-2000 : 46.0" (H) x 43.7" (W) x 38.7" (D)/223 lb.		
MEDIA			
Media Feed	Front-Loading Roll Feed: One Roll, Front Output Front-Loading Manual Feed: Front Loading, Front Output		
Media Width	PRO-4000 : 8" - 44" (Cut-Sheet and Roll) PRO-2000 : 8" - 24" (Cut-Sheet and Roll)		
Minimum Media Length	8"		
Maximum Print Length*	59" (Roll Paper) 63" (Cut-Sheet)		
Borderless Printing Widths	PRO-4000 : 10"/14"/17"/24"/36"/42"/44" PRO-2000 : 10"/14"/17"/24"		
Media Thickness	.07 mm - .08 mm		
Media Core Sizes	2" or 3" Core (with Supplied Adaptor)		
Printable Margins	Roll Paper: Top: 3 mm; Bottom: 3 mm; Side: 3 mm Cut-Sheet: Top: 3 mm; Bottom: 20 mm; Side: 3 mm		
Maximum Media Roll (Outer Dia.)	6.7" (170 mm)		



Lyndhurst (201) 438-1500
Edison (732) 225-4330
Ewing (609) 882-6330
Elmsford (914) 592-1212
Manhattan (212) 772-0581



Canon and imagePROGRAF are registered trademarks and LUCIA PRO is a trademark of Canon Inc. in the United States and may also be registered trademarks or trademarks in other countries. All other referenced product names and marks are trademarks of their respective owners. Some items may not be available at this time; please check for availability. All images are simulated. Specifications and availability subject to change without notice. Not responsible for typographical errors.
©2016 Canon U.S.A., Inc. All rights reserved.

0216-4000/2000BR0-1M-BJA

